



One Design Racing

No Ratings....No Excuses



Throwdown in Motown

North Star Sail Club

August 15-16

SAILING INSTRUCTIONS

North Star Sail Club, Harrison Township, MI, USA, is the organizing authority.

1 RULES This regatta will be governed by the rules as defined in *The Racing Rules of Sailing* (RRS) and as modified by the J/35 Class Association (JCA) rules, the Level 35 Class Detroit (LCD) rules, the Catalina 22 National Sailing Association, this notice of race, and the sailing instructions for this regatta.

2 NOTICES TO COMPETITORS

2.1 Official notices to competitors will be posted on the free-standing case to the west of the parking lot side of the North Star Sail Club clubhouse (32041 S River Rd, Harrison Township, MI 48045).

2.2 Notices and communications on the water may be made by the Race Committee (RC) Signal Boat on VHF channel 72 from one hour before the warning signal for the first start each day until one hour after all boats have finished. Boats shall not receive any communication not available to all competitors.

3 CHANGES TO THE SAILING INSTRUCTIONS

3.1 Changes to the Sailing Instructions will be posted as provided in SI 2.1 before 0900 of the day on which they will take effect, except that any change in the schedule of races will be posted before 2000 on the day before it will take effect.

3.2 Per RRS 90.2(c), when RC flies Code "L" flag, ("come within hail"), verbal changes may be given altering any part of these instructions. The Race Committee will monitor VHF channel 72.

4 SIGNALS MADE ASHORE Signals made ashore will be displayed at the NSSC flag pole. RRS Race Signals AP is changed as follows. When flag AP is displayed ashore, "1 minute" is replaced with "not less than 60 minutes."

5 SCHEDULE

5.1 Registration, Saturday, August 15, 0800–0830, at North Star Sail Club clubhouse, 32041 S. River Rd, Harrison Township, MI 48045.

5.2 Skippers' meeting, Saturday, August 15, 0830, at North Star Sail Club clubhouse riverfront.

5.3 The **warning signal for the first start** is scheduled for 1030 each day.

5.4 The intention is to run as many races over the two days as possible.

5.5 No races will be started after 1500 on Saturday or after 1400 on Sunday.

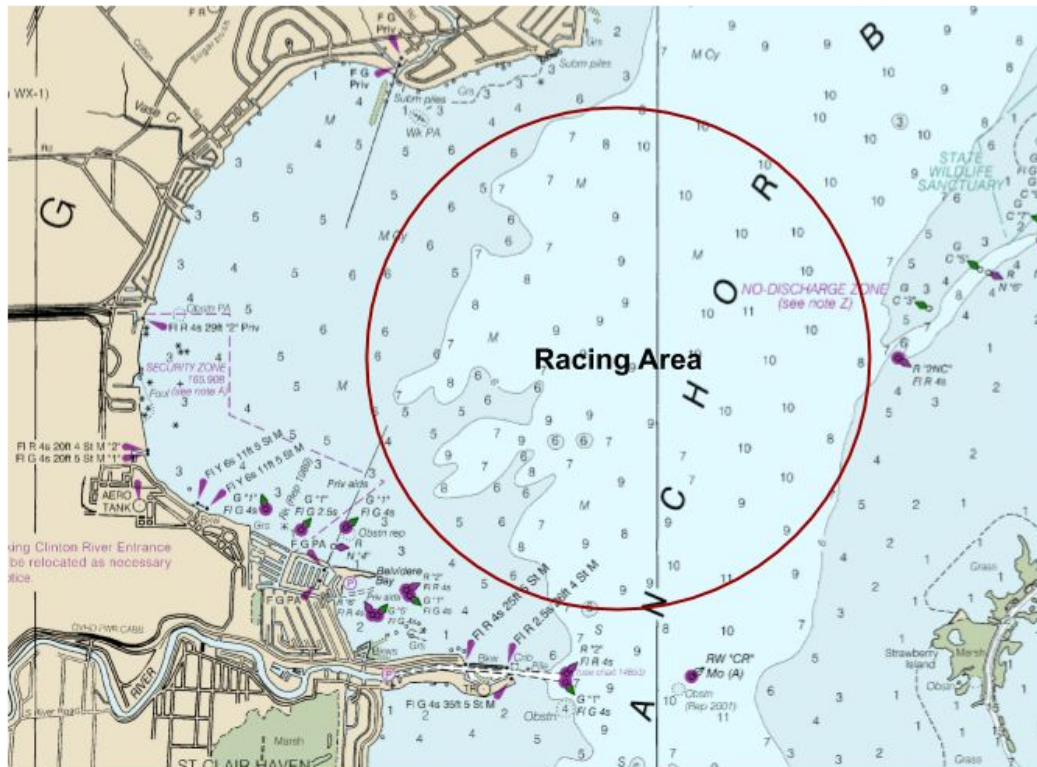
6 CLASS FLAGS

6.1 The class flag for the J/35, T35 will be a pink flag

6.2 The class flag for the Catalina 22 will be a light blue flag.

7 RACING AREA

7.1 The racing area will be Anchor Bay, Lake St. Clair. The chart shows the approximate location of the racing area.

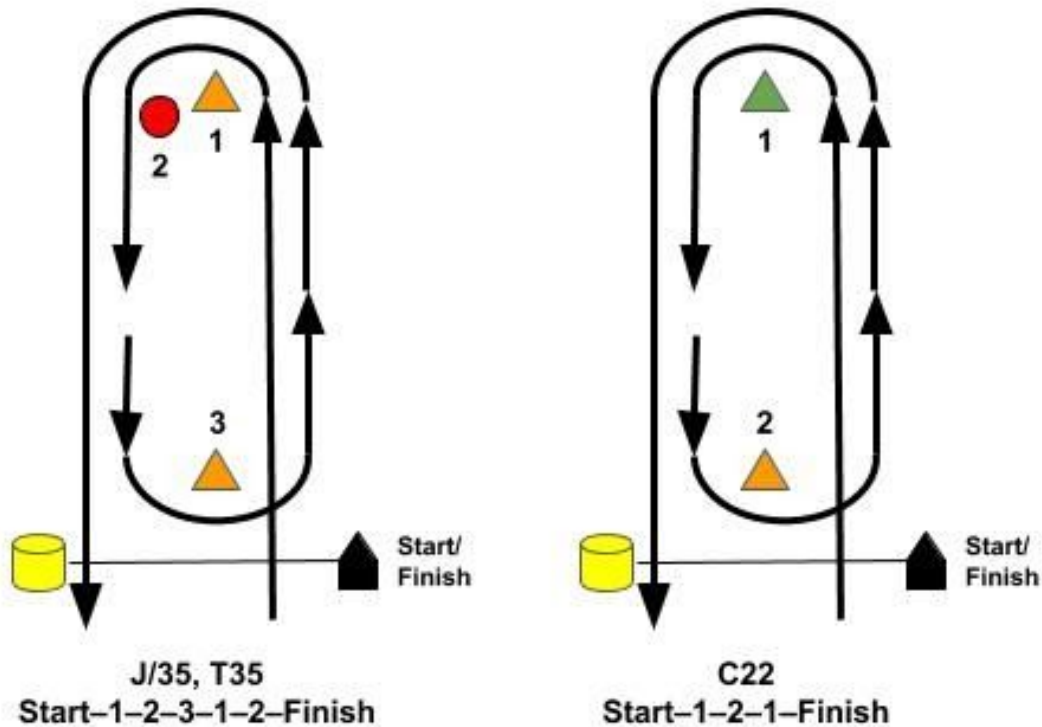


8 COURSES

8.1 The course diagrams below show the courses, the order in which marks are to be passed, and the side on which each mark is to be passed for each class.

8.2 No later than the warning signal, the RC Signal Boat will designate the compass heading to the first mark and the distance (NM) from the starting line to mark 1.

8.3 Course legs will be approximately 1.0 NM or less for the J/35, T35 class and 0.6 NM or less for the Catalina 22 class.



9 MARKS

9.1 All classes

1. Start/finish mark will be a yellow cylinder.
2. New marks, as provided in SI 12, will be yellow.
3. The RC may set a protection buoy with a line attached to the Signal Boat. Boats shall not touch the protection buoy or pass between the protection buoy and the Signal Boat.

9.2 J/35, T35

1. Marks 1 and 3 will be orange tetrahedrons.
2. Mark 2 will be a red ball.

9.3 Catalina 22

1. Mark 1 will be a green tetrahedron.
2. Mark 2 will be an orange tetrahedron.

10 STARTING LINE - The starting line will be between a staff displaying an orange flag on the RC Signal Boat at the starboard end and the course side of the start mark at the port end.

11 INDIVIDUAL and GENERAL RECALLS The RC may attempt to hail boats that have not started properly on VHF channel 72. The following are not grounds for redress: failure to hail any or all boats; failure to accurately hail one or more boats; failure of a boat to hear its hail; timeliness of the hail; or the order of boats are hailed. This changes RRS 62.1(a).

12 CHANGE OF COURSE To change the next leg of the course, the RC will lay a new mark (or move the finishing line) and remove the original mark as soon as practicable. When in a subsequent change, a new mark is replaced, it will be replaced by an original mark.

13 THE FINISH - The finishing line will be between a staff displaying an orange flag on a boat displaying an RC flag and the course side of the nearby finishing mark.

14 TIME LIMITS

14.1 The time limit to sail the course is 60 minutes. A boat finishing within the time limit extends the time limit by 20 minutes.

14.2 If no boat has passed the first *mark* within 45 minutes after the starting signal, the race shall be abandoned.

14.3 Boats failing to finish within the time limit and not subsequently retiring, penalized, or given redress will be scored Time Limit Expired (TLE) without a hearing. This changes RRS 35, A4 and A5.

15 PROTESTS

15.1 Protests shall be delivered to the Protest Table at NSSC within 60 minutes after the RC Signal Boat docks. This time will be broadcast on VHF channel 72 and posted as provided in SI 2.1.

15.2 The protest time limit, a list of protests received, and time and place of hearings will be posted as provided in SI 2.1. Hearings will be held as soon as possible after racing each day.

16 SCORING RRS A2 is changed as follows. One race completed constitutes a series. All races will be included in a boat's series score.

17 HAUL-OUT RESTRICTIONS Boats shall be afloat and shall not be hauled out from 1800 on Aug 14 until the end of the regatta, except with and according to the terms of written permission of the RC.

18 SAFETY REGULATIONS A boat that retires from a race or leaves the racing area is requested to notify the RC on VHF channel 72, by cell phone (586-246-4171), or by hailing any RC boat. A boat that subsequently returns to the racing area is asked to check in with the RC Signal Boat on VHF channel 72. There will be no penalty for not checking out or back in.

19 AWARDS Overall trophies will be awarded following dinner on Sunday August 16th.

20 DISCLAIMER OF RESPONSIBILITY Competitors participate in the regatta entirely at their own risk. See RRS 4, Decision to Race. The organizing authority will not accept any liability for material damage or personal injury or death sustained in conjunction with or prior to, during, or after the regatta.

21 INSURANCE Each participating boat shall be insured with valid third-party liability insurance.

Revised 2020-08-10